

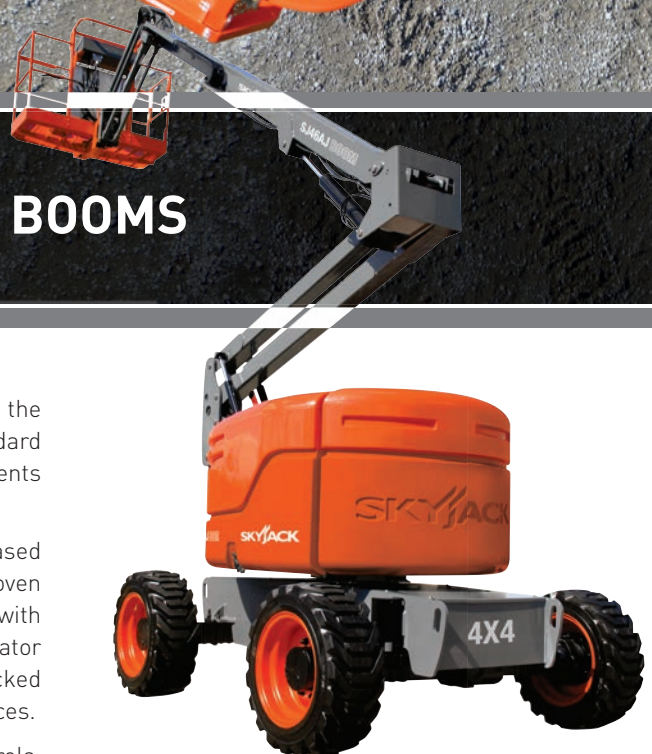


## SJ46 AJ SJ51 AJ ARTICULATING BOOMS

The A-SERIES boom lifts are available in two configurations featuring the 46AJ and 51AJ models. Both models boast an industry leading, standard equipped, 360 degree continuous turret rotation. Zero tail swing compliments the turret design allowing for flexible operation in tight locations.

Superior positive traction and terrainability is provided by the axle based 4WD used in many of Skyjack product designs, which accounts for a proven low maintenance, rugged and reliable drive train. The AJ's are equipped with a rear axle hydraulic differential lock/unlock switch allowing the operator to lock the rear differential when negotiating rough terrain. The unlocked position improves turning radius and reduces tire marks on hard surfaces.

Other key features include; direction sensing drive and steer controls, true vertical rise with riser function which prevents drifting forward or backwards, analog based controls and Skyjack's standard colour coded and numbered wiring system.



**SKYJACK**

# ARTICULATING BOOM LIFTS

## SPECIFICATIONS

### SJ46AJ

### SJ51AJ

2006/42/CE

Work Height	16.15 m	17.58 m
Platform Height	14.15 m	15.58 m
Horizontal Reach	7.68 m	9.16 m
Up and Over Height	7.63 m	7.63 m
Platform Size	1.83 x 0.76 m	1.83 x 0.76 m
Stowed Width	2.24 m	2.24 m
Tailswing	Zero	Zero
Stowed Height	2.07 m	2.07 m
Stowed Length	6.50 m	7.25 m
Wheelbase	2.03 m	2.03 m
Ground Clearance	0.40 m	0.40 m
Rotation	360°	360°
Platform Rotation	180°	180°
Jib Length	1.42 m	1.42 m
Jib Range +/-	+70° / -75°	+70° / -75°
Weight	6981 kg	7316 kg
Gradeability	45%	45%
Turning Radius (Inside)	2.48 m	2.48 m
Turning Radius (Outside)	5.1 m	5.15 m
Axle Oscillation	0.20 m	0.20 m
Drive Speed (High speed)	7.7 km/h	7.7 km/h
Capacity	227 kg	227 kg
Local Floor Load ( With Rated Load)	827 kPa	917 kPa
Overall Floor Load (With Rated Load)	10.9 kPa	11.4 kPa
Maximum # of Persons	2	2
Tyre Type	Grip lug foam-filled	Grip lug foam-filled
Diesel Engine	48 HP	48 HP
Fuel Tank Capacity	64 L	64 L
Hydraulic Reservoir	91 L	91 L

## STANDARD FEATURES

- Axle based 4WD system
- Operator controlled locking rear differential and limited slip front differential
- Oscillating axle
- Drivable at full height
- 360° continuous turret rotation
- 45% Gradeability
- 48 HP Deutz diesel engine
- Swing out engine tray
- Swing up cowlings
- Modular platform railing system
- Wiring for outlet on platform
- Direction sensing drive and steer controls
- Proportional controls
- Relay based control system
- Colour coded and numbered wiring
- Hourmeter
- Overload sensing system
- Operator horn
- Spring hinged gate
- Lanyard attachment points
- Tie down/lifting lugs
- Wet disc SAHR brakes (rear axle)
- Grip lug foam-filled tyres

## OPTIONS<sup>‡</sup>

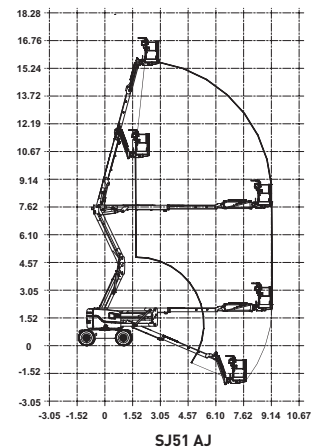
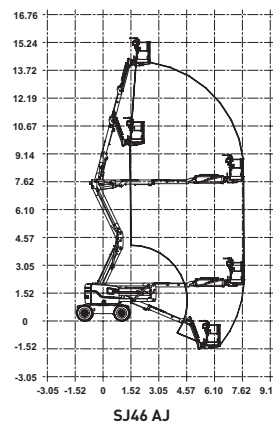
- 0,76 x 1,52 m Platform
- Airline to platform
- 3.5 kW generator (Includes hydraulic oil cooler)
- Cold weather start kit
- Diesel scrubber
- Hydraulic oil cooler
- Flashing light
- Platform work lights
- All motion alarm

## Tyre Options ‡

- Grip lug foam-filled non marking tyres

‡ Standard lead times may be increased when optional equipment is added, consult factory

\*\* Capacities, and machine weights may differ when options are added



‡ Standard lead times may be increased when optional equipment is added, consult factory

\*\* Capacities, and machine weights may differ when options are added

### Skyjack Head Office

55 Campbell Rd. Guelph, ON Canada N1H 1B9  
Sales Inquiries: 1-877-755-4387  
(1-877-SJLIFTS)  
Main Switchboard: 1-800-265-2738  
Phone: 1-519-837-0888  
Fax: 1-519-837-8104  
Email: skyjack@skyjack.com

www.skyjack.com

### Skyjack UK

Unit 1, Maes-y-Clawdd  
Maesbury Road Industrial Estate  
Oswestry, Shropshire, SY10 8NN  
Tel: +44 1691 676235  
Fax: +44 1691 676239  
Email: info@skyjackeurope.co.uk

### Skyjack France

ZI Le Clairin  
69700 Saint Romain en Gier  
France  
Tel. +33 (0) 4 78 73 53 32  
Fax. +33 (0) 4 78 56 52 42

### Skyjack Hebebühnen GmbH (Deutschland)

Därmanbusch 2a  
58456 Witten  
Tel: +49 (0)2302 20 26 909  
Fax: +49 (0)2302 20 25 671

### Skyjack AB (Sweden)

Marieholmsgatan 2  
415 02 Göteborg  
Sweden  
Tel: +46 31212245  
Fax: +46 31212066



# SKYJACK™



**ADVANCED  
ACCESS PLATFORMS**

This brochure is for illustrative purpose only and based on the latest information at the time of printing. Skyjack Inc. reserves the right to make changes at any time, without notice, to specifications, standard and optional equipment. Consult the Operating Maintenance and Parts Manuals for proper procedures. CE marked work platforms are in conformance to Machinery Directive 2006/42/EC.

EU/ENG/03/2013